



September 5 – 15, 2009

21st SUMMER DEAFLYMPICS ORIENTEERING EVENT

Bulletin 1&2 - Preliminary Information

Welcome to the 21st Summer DEAFLYMPIC GAMES in Taipei, Taiwan

International Committee of Sports for the Deaf (ICSD) has awarded the 21st Deaflympic Games to the City of Taipei, Taiwan. Orienteering is one of the 20 official sports included in the program of these games. The Chinese Taipei Orienteering Association has been entrusted with the organization of the orienteering events and is pleased to welcome the world's elite orienteers to this event.

1. The 2009 Deaflympic Games

The games are built on 85 years of tradition. Organized since 1924 by the Comité International des Sports des Sourds, ICSD (The International Committee of Sports for the Deaf). The Deaflympic Games take place every four years. The Summer Deaflympics and the Winter Deaflympics shall be held, in turn, each second year. These Deaflympics receive official patronage of International Olympic Committee.

The programme of the summer Deaflympic Games includes competitions in 20 official sports on the invitational program. More than 3000 athletes and officials are expected to participate in the competitions that will take place at 22 different venues in Taipei.

2. Venue

The orienteering events will be organised at Cingtiangang and the YangMing Park. The model event will be organized at the Nangang Park. All venues are located in Taipei City.

3. Travel to the Taipei

Transportation in Taiwan is highly convenient for both international and domestic travel. There are two international airports in Taiwan. Taiwan Taoyuan International Airport (<http://www.taoyuanairport.gov.tw>) is closer to Taipei city. Convenient transportation with coach and Taiwan High Speed Rail are recommended for reaching Taipei. International Airport in Kaohsiung is about 2 hours away from Taipei city by Taiwan High Speed Rail (<http://www.kia.gov.tw/main.asp>) or about 4.5 hours driving by public transportation including coach or train. Only limited flights arrive at Taipei Sonshan Airport (<http://www.tsa.gov.tw/english/index.htm>) which is located in Taipei.

The Taoyuan High Speed Rail Station shares the same complex with the Taoyuan International Airport metro station (MRT A18 Station). Passengers can transfer from high speed rail directly to the airport metro system. For information regarding travel to Taipei, please consult (<http://www.taipeitravel.net/user/main.aspx?Lang=2>)

4. Entry permits (Visas)

The visa regulation of the Republic of China (Taiwan) provides visa-exempt entry to participants whose passports are issued by the countries listed below.

Australia, Austria, Belgium, Canada, Costa Rica, Czech Republic, Denmark, Estonia, Finland, France, Germany, Greece, Hungary, Iceland, Ireland, Italy, Japan, Republic of Korea, Liechtenstein, Lithuania, Luxembourg, Malaysia, Malta, Monaco, the Netherlands, New Zealand, Norway, Poland, Portugal, Singapore, Slovakia, Spain, Sweden, Switzerland, U.K. and U.S.A.

Visa-Exempt Entry generally allows a person to stay in Taiwan for **30 days** with a passport that is valid for at least **6 months** upon entry, except that Japanese citizens may enter into Taiwan with a passport valid for at least **3 months** and stay in Taiwan for **90 days**.

For more information about the Visa-Exempt policy, please visit the website of the Bureau of Consular Affairs, Ministry of Foreign Affairs:

<http://www.boca.gov.tw/ct.asp?xItem=1443&ctNode=116&mp=2>

5. Event Program

Discipline	Date	Time	Event / Activity	Venue
	Sun Sep 06	09:00 - 17:00	Model Event	CKS Memorial hall
	Mon Sep 07	09:00 - 17:00	Model Event	Nan-Kang Park
		10:00 - 13:00	Technical Model Event	
Sprint Distance	Tue Sep 08	09:45 - 09:55	Opening Ceremony	Yang-Ming Park
		10:00 - 11:00	Sprint Distance - Women Sprint Distance - Men	
		12:00	Prizegiving Ceremony, Sprint Distance	
Middle Distance	Wed Sep 09	10:00 - 12:00	Middle Distance - Women Middle Distance - Men	Chin-Tiang-Gang
		13:00	Prizegiving Ceremony, Middle Distance	
Long Distance	Fri Sep 11	10:00 - 13:30	Long Distance - Women Long Distance - Men	Chin-Tiang-Gang
		14:00	Prizegiving Ceremony, Long Distance	
Relay	Sun Sep 13	09:30 - 13:30	Relay - Women Relay - Men	Yang-Ming Park
		14:00	Prizegiving Ceremony, Relay	

6. Accommodation during the Deaflympic Games

The Organising Committee will help out with hotel booking for national delegation members ONLY; we will NOT help out with hotel booking for relatives of delegation members, supporters, or volunteers. Each delegation please download hotel booking form, fill it out, and return to OC; please remember to submit booking information using the name of your delegation's country.

Should you have any further questions, please contact Betty Yen at:

yahsin.yen@2009deaflympics.org

7. Transportation during the Deaflympic Games

Further details to be published in Bulletin 3.

8. Technical Information

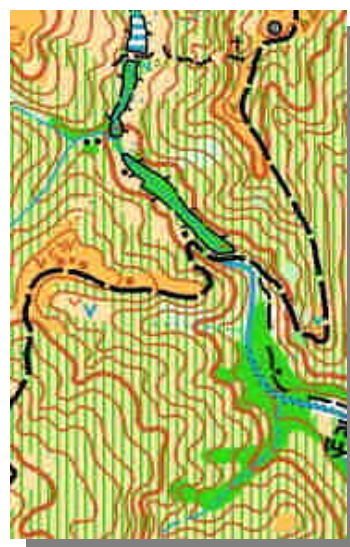
Sprint: Park land

Relay: The terrain is the same as the sprint distance(Park land)



Middle distance: The competition terrain is mostly forested and with some park land area.
Runnability varies greatly, some area the length of grass about 160cm.

Long distance: The terrain is the same as the middle distance.



Map and preliminary course information

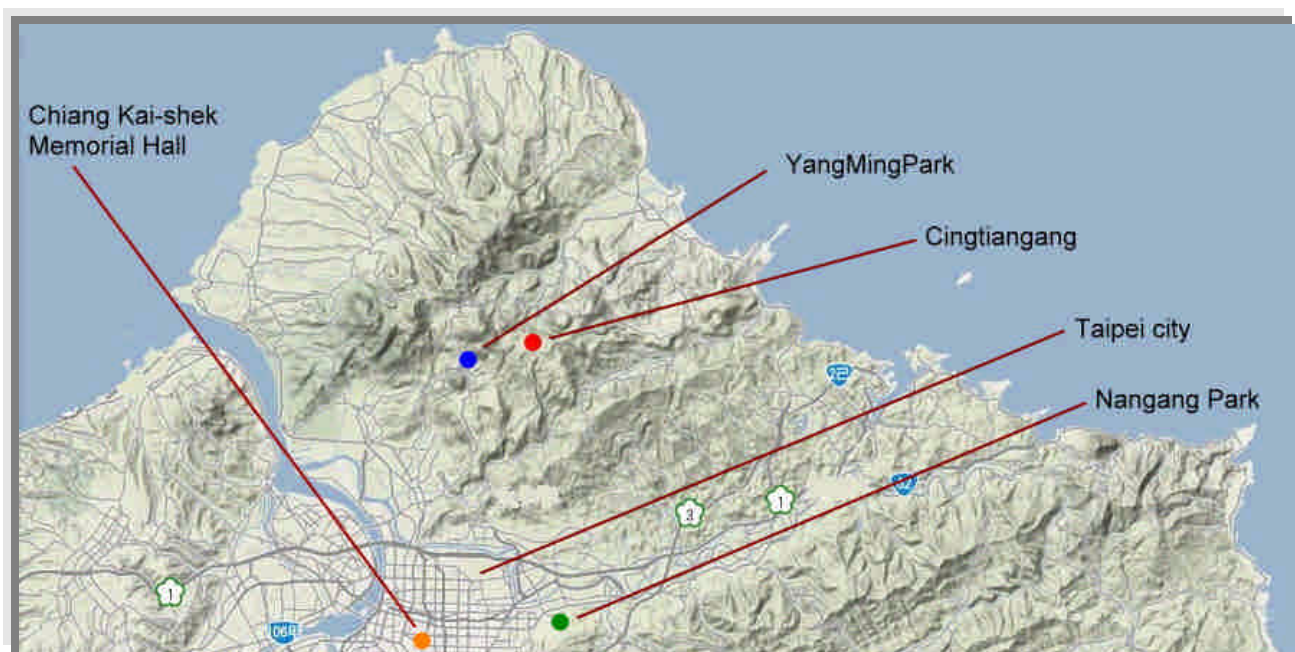
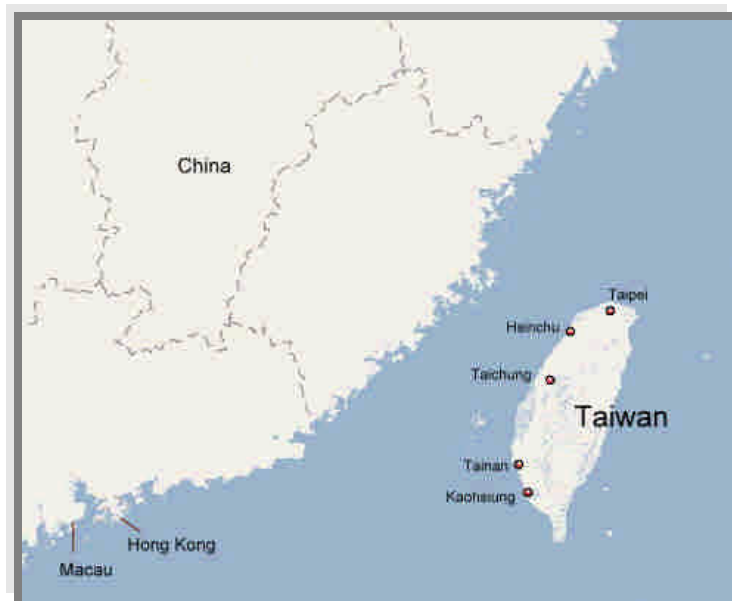
	Map scale	Contour interval	Winning Time
Sprint	1:4000	2m	12-14 mins.
Middle distance	1:7500	5m	30-35 mins.
Long distance	1:7500	5m	70-90 mins.
Relay	1:4000	2m	25 mins./ per leg

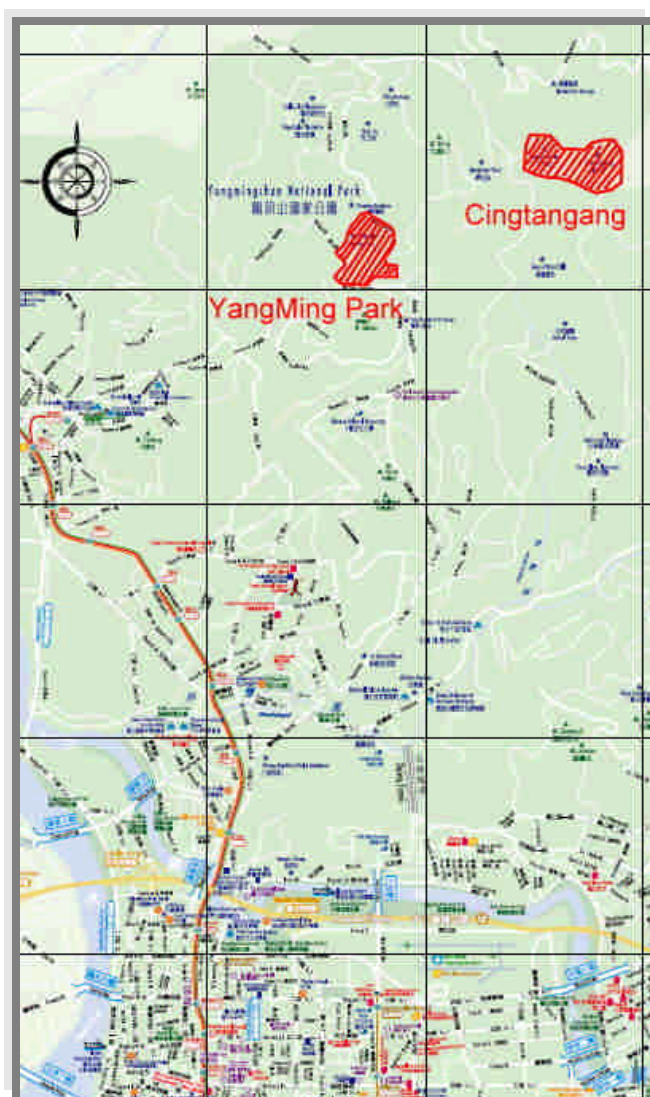
9. Clothing Restrictions

No full length spike shoes are allowed for Sprint and Relay competitions. Full body cover is recommended for Middle and Long Distance competitions.

10. Embargoed Areas

The following areas in Taipei, Taiwan, are embargoed until the end of the Deaflympic Games 2009:





Cingtangang, orienteering map 1:10000 (2005)

YangMing Park, orienteering map 1:4000 (2005).

11. Model Event

The model event will be organized in representative terrain for the sprint at the Nangang Park and Chaing Kai-Shek memorial hall(CKS memorial hall).

Technical features will be demonstrated for all competitions.

12. Punching and Timing Systems

The punching system in all 2009 Deaflympics orienteering competitions will be the SportIdent electronic punching system.

In all individual competitions the start times will be taken electronically using a gate start. The finish times will be taken by means of photo-cells when the runner's chest crosses the finish line. The running times will be rounded down to the nearest 0.1 second.

The start and finish procedures will be demonstrated at the Technical Model Event on Monday, Sep 07, 10.00-13.00 in the Nan-Kang Park.

13. Climate

Taipei, located in the northern part of Taiwan. In September the temperature ranges from 21 to 29° C, an average of 288mm of rain falls.

14. Organisation

Technical and protest committee:

Marek MIR-MACKIEWICZ(Denmark)

Christine BROWN(Australia)

Chih-Yuan LIN(Chinese Taipei)

Yi-Zuo LIN(Chinese Taipei)

Technical Director: Marek MIR-MACKIEWICZ (Denmark)

Local organizer: Chinese Taipei Orienteering Association (CTOA)

CTOA Secretary General: Wei- Kuang Lee

SLO (Sports Liaison Officer): Chih-Yuan Lin (Chinese Taipei)

Competition Director: Chun-Ming Chen (Chinese Taipei)

Map Production: Perola Olsson (Sweden)

Jung-Chung Wu (Chinese Taipei)

Course planners:

Chih-Yuan Lin

Jung-Chung Wu

Chang-Chan Yang

15. Further information

Further information will be circulated to the participating federations at a later stage.